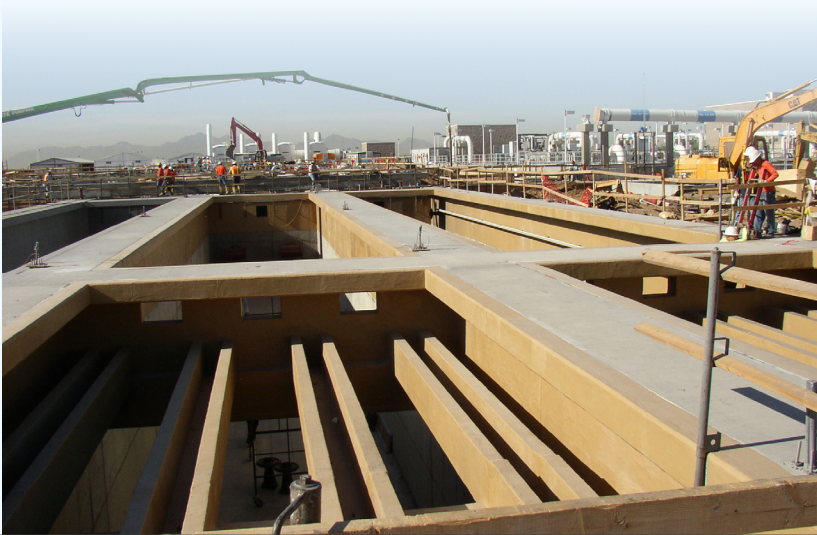


# SEWERGARD®

Specialty Polymer Materials for the Protection & Rehabilitation  
of Wastewater Infrastructure

## SAUERREISEN



# SPECIALIZED CORROSION-RESISTANT LINING

Sauereisen's renowned SewerGard® No. 210 is a field-proven, unique polymer lining system. It is specifically formulated for municipal wastewater environments and offers an economical solution to Microbiologically Induced Corrosion (MIC). SewerGard® resists high concentrations of sulfuric acid and treatment chemicals. It also exhibits moisture tolerance allowing it to bond directly to damp concrete. SewerGard® No. 210 is 100% solids and environmentally compliant - with no VOC's.

SewerGard® is available in six different variations for Municipal Wastewater and 3 variations for Industrial Wastewater. Each variation is engineered to maximize protection of various wastewater treatment structures and application methodologies. Depending on project specifications, application by trowel, roll, airless spray, plural-component spray or spincasting may be appropriate.

## MUNICIPAL WASTEWATER

**SewerGard® No. 210 - Trowelable** formulation is an aggregate-filled epoxy. Its nonsagging consistency makes it the material of choice for vertical and overhead surfaces where access is limited. Standard application thickness is 125 mils, however, greater thicknesses can be achieved.



**SewerGard® No. 210RS - Rotary Spray** formulation is a pumpable grade of SewerGard® specifically designed to line the interior of manholes from street level. No. 210RS is applied at 60-125 mils using typical rotary application equipment.



**SewerGard® No. 210S - Sprayable** formulation is fiber-reinforced for a high degree of durability. No. 210S allows quick installation by a single 60-mil coat when applied by standard airless equipment. It is ideal for large-scale applications.



**SewerGard® No. 210X - High-Strength** formulation is a high-strength lining that enables high-build capabilities wherever extreme corrosion conditions exist. It is easily applied by plural-component or conventional airless spray equipment.



**SewerGard® No. 210G - Glaze** formulation is a two-component, chemical-resistant, 100% solids polymer for use as an optional 15-20 mil sealer coat over other SewerGard® products, or as a stand-alone coating. This coating forms a smooth surface that is easy to maintain and cosmetically appealing. No. 210G is easily applied by plural-component or conventional airless spray equipment at up to 60 mils per coat, or hand-applied by roller at up to 20-25 mils per coat over steel or concrete.



**SewerGard® No. 210FS (Fast-Set)** formulation is a fast-setting version of the SewerGard® epoxy material engineered for use in wastewater environments. It is particularly useful for the protection of manhole benches, inverts and other structures which are subject to very short downtimes.



Each formulation of SewerGard® provides an impermeable, high strength, corrosion-resistant lining for structures subject to infiltration and attack from hydrogen sulfide and acid generated by microbiological sources.

Locations such as:

- Manholes
- Lift Stations
- Grit Chambers
- Tunnels
- Aeration Basins
- Clarifiers
- Digesters
- Wet Wells

### Made for Each Other

At Sauereisen, we understand the nuances of intercoat adhesion. We're also sensitive to the urgency of minimizing construction downtime. That's why we provide the security and convenience of single source supply when it comes to concrete repair. Through our RestoKrete™ products, we offer a full line of Underlayments and Substrate Repair Materials as well.

## INDUSTRIAL WASTEWATER

**SewerGard® No. 210TN - Trowelable** is an aggregate-filled, novolak epoxy material for concrete protection. The trowelable, non-sagging coating is designed to resist a wide range of industrial chemicals and to prevent water infiltration, and can be applied over damp or dry surfaces.

**SewerGard® No. 210SN - Sprayable** provides barrier resistance to thermal shock in cooler environments and is resistant to high temperatures. Designed for protection of concrete and steel, the fiber-reinforced, chemically resistant, 100% solids epoxy novolak lining system provides excellent flexural strength and ultra-low permeability.



**SewerGard® No. 210GN - Glaze** is specifically designed to resist strong acid environments, including 98% sulfuric acid, and is also formulated to resist strong oxidizing environments. It can be applied by spray or roller. The chemically resistant, 100% solids, epoxy novolak coating system is used as a topcoat for Sauereisen SewerGard® Industrial systems or as a stand-alone coating to protect concrete and steel from chemical attack.



## We've Got You Covered

Sauereisen brings decades of experience in developing, manufacturing and marketing corrosion protection and specialty materials for the Wastewater Industry.

We continue our tradition of innovation ...**Since 1899**

Contact us for a copy of our SewerGard® and SewerGard® Industrial Chemical Resistance Charts. Our Chemical Charts indicate the general resistance of specific materials to a wide range of chemicals based on testing and experience. Specific recommendations based on individual circumstances though, should be obtained from your Sauereisen representative.

**160 Gamma Drive, Pittsburgh, Pennsylvania 15238-2989**  
**412-963-0303 fax: 412-963-7620**  
**www.sauereisen.com email: questions@sauereisen.com**

### LEGAL NOTICE

Sauereisen®, SewerGard®, ConoCrete™, RestoKrete™, ConoGlaze™, and FibreCrete™ are all products or services denoted with ™ or ®. These trademarks or registered trademarks of Sauereisen, Inc. Sauereisen trademarks may not be used in conjunction with any product or service that is not a Sauereisen product or service.